



*26.-27.4.2025 • Kemiönsaari-Kimitoön, Finland*

Welcome to the Värska Finnish Spring long distance orienteering competition that will be held in Kimitoön (Kemiönsaari) in the Turku Archipelago on 26th April 2025. The competition will be an IOF World Ranking Event.

## **Bulletin 1 (24th December 2024)**

### **Event organizers**

Kimito SF and Pargas IF

### **Main officials**

Event director	Roald von Schoultz
WRE course setters	Markku Virtala and Jenny Virtala
Result service	Niko-Petteri Salo / ResultSalo
WRE contact person	Linus Hoffman
Technical & IOF Event Adviser	Johan Uusimäki
Course controller	Eero-Antti Lonka

### **Event websites**

[Värska Finnish Spring 2025](#)

[Eventor.orienteering.com](https://eventor.orienteering.com)

### **Information**

[linus.hoffman@yle.fi](mailto:linus.hoffman@yle.fi)

phone number +358-40-5938081

### **Venue**

Dalsbruk outdoor area, Olavi Hjellmans väg 1, 25900 Dalsbruk

Guidance from the intersection of Finland's national roads 183 and 1830, from where it's about 6 kilometers to the event center. The guidance will be in place from Saturday, 26th April, starting at 7:00 am.

Parking will be in the town center of Dalsbruk (Taalintehdas). The distance from the parking to the event center is 0,6-1,4 kilometers. The parking fee is 5 € for one day, or 8 € for two days, to be paid at the information desk.

## **Dates and type of competition**

Saturday 26th April 2025, Long distance

## **Classes and entry fees**

**WRE:** M/W21E (40 €)

In the WRE classes M/W21E, 60 competitors will be selected. Selection is made according to world ranking points dated 22nd April 2025 (45 competitors/class) and the final ranking of 2024 for long distance race (10 competitors/class) and also 5 competitors/class, that are selected by the Finnish Orienteering Federation's coaching management and approved by the IOF event adviser.

Starting order is according to the world rank score at entry date. The competitors that are not selected in classes M/W21E are transferred to parallel classes M/W21EB according to IOF's WRE rules. The main classes and possible parallel classes are all WRE competitions.

## **Courses and estimated times**

The estimated winning times are 88-92 min. The final course lengths will be published in Bulletin 2, issued at the latest a week before the competition.

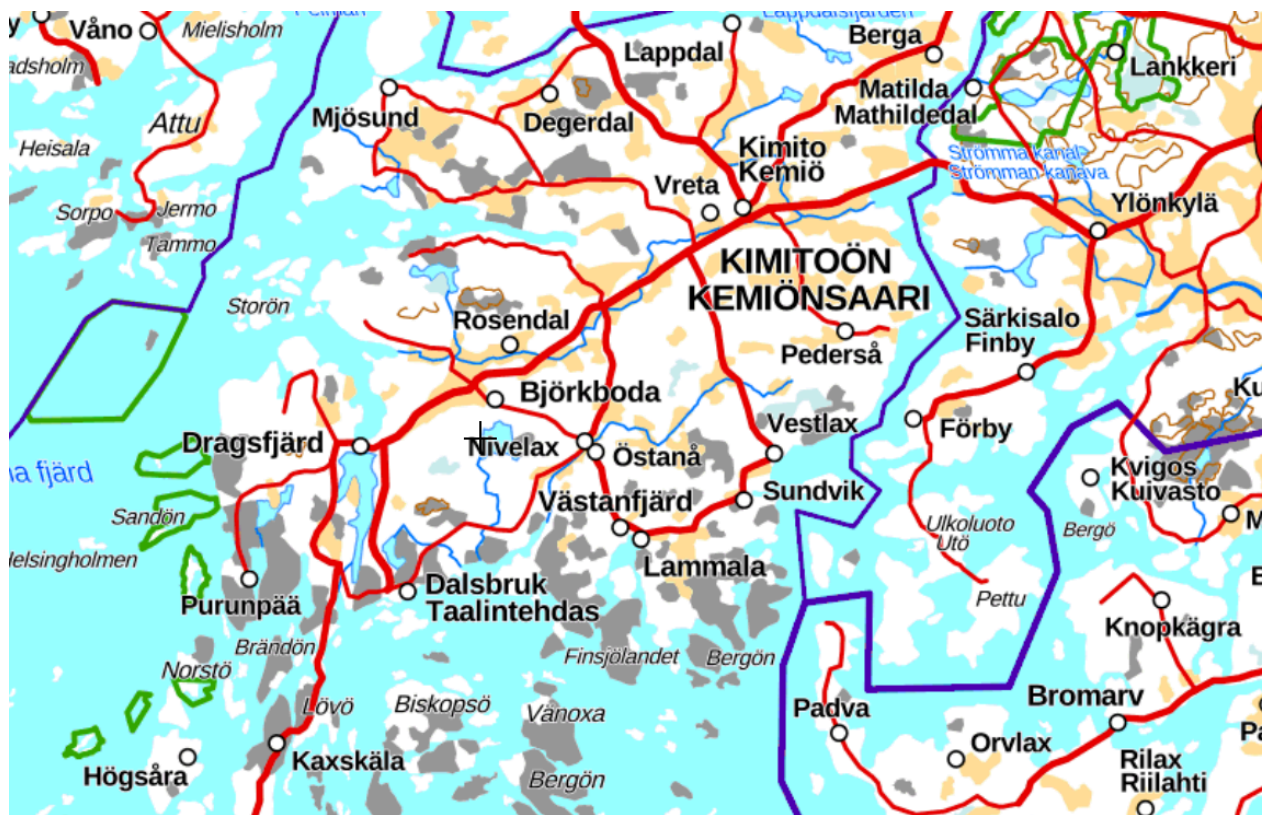
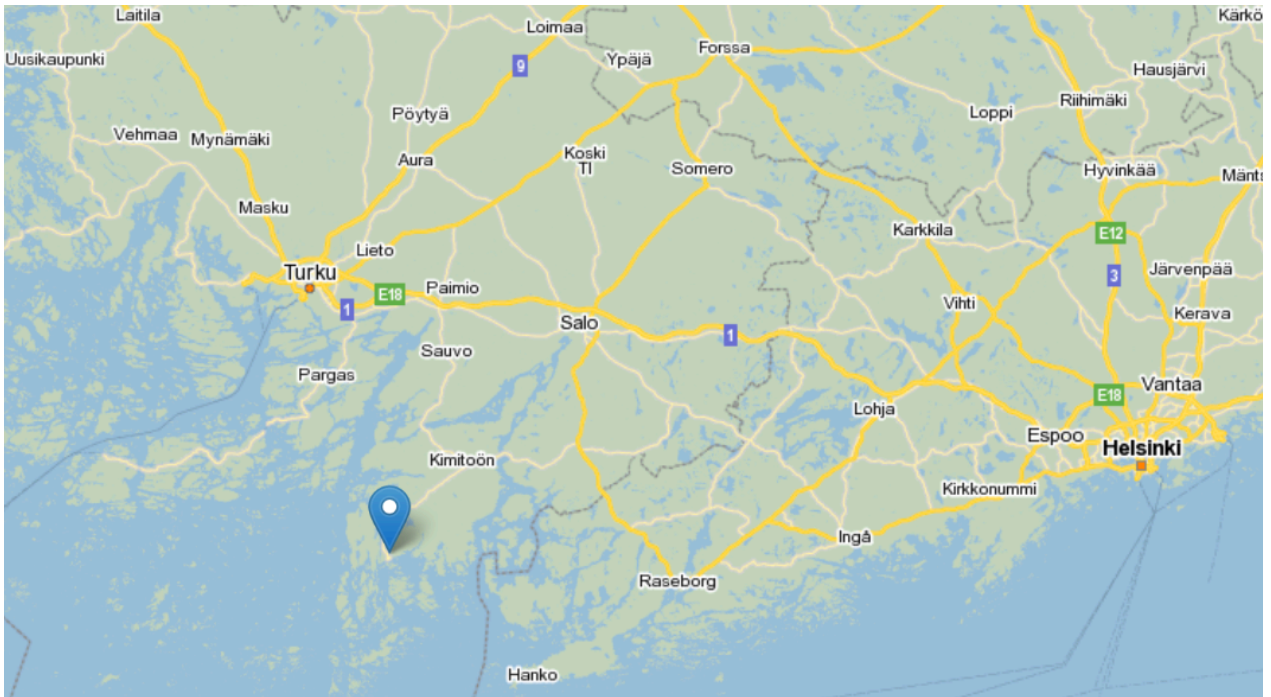
## **Competition rules**

This event follows the rules of the Finnish Orienteering Federation, the IOF guidelines for World Ranking Events, and the instructions given by the organisers.

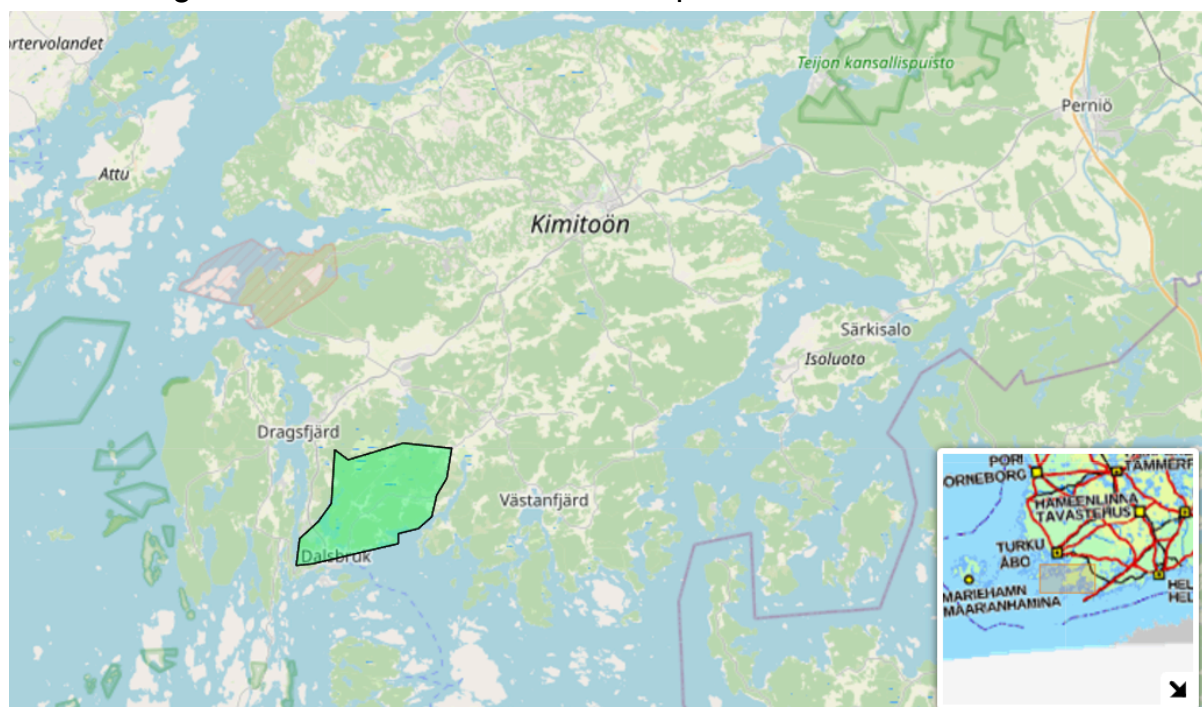
It is forbidden to use spike shoes, but shoes with studs are permitted.

Competitors must not use or carry communication devices that can transmit or receive information. GPS-enabled devices (watches etc.) can be carried provided that they are not used for communication or navigation. The organiser may require competitors to carry a tracking device and/or a GPS data logger.

## General map of the region and the embargoed area



The embargoed area is indicated on the map below



### **Registration, latest date and address for entries**

The deadline for entries is at midnight on 20th April 2025. Entries primarily through IRMA (<https://irma.suunnistusliitto.fi>). Instructions in English for IRMA: <https://www.suunnistusliitto.fi/irma/irma-instruction-for-foreigners/>  
<https://www.suunnistusliitto.fi/system/wp-content/uploads/2014/11/Instructions-for-foreigners.pdf>

Non-Finnish participants without IRMA ID may register via IOF Eventor (WRE classes M21E, W21E).

Non-Finnish participants who register for a WRE class through IOF's Eventor must pay their registration fees in euros to:

Account holder: Pargas IF / orientering

Bank name: Ålandsbanken

IBAN: FI02 6601 0001 2168 86

BIC / SWIFT: AABAFI22

The deadline for the registration fees is 20th April 2025.

Late registration by midnight on 23rd April 2025 through the IRMA with the regular fee multiplied by 1.5.

In the event of any changes to registration information, please email:  
[niko@resultsalo.fi](mailto:niko@resultsalo.fi)

### **Punching system**

The electronic punching system Emit will be used. Rental Emit cards are available from the event organizer, fee 5 €. Need for Emit card rental must be issued with the entry. If the rental Emit card is not returned after the competition there will be a charge of 95 €.

### **Map**

Scale: 1:15 000 in the WRE classes, contour interval: 5 m, printed 4/2025.

Mapping made by Markku Virtala 2023-2025. A qualification race for WOC 1985 was held in the same terrain, partly remapped 2008/2010.

The competition maps are in size A3 and will be in plastic map bags.

### **Terrain**

The competition terrain offers well managed commercial forests, exposed rock surface with detailed contours, and some marches. The terrain is typical for the archipelago in southwestern Finland. The maximum height of the hills are 40 meters, with some rocky slopes.

The visibility and runnability are mostly good or very good. Some roads cross the map. Closer to the event center there are several trails.

### **Climate**

The end of April is usually moderately warm in the southwestern part of Finland, depending on how the spring progresses. The mean temperature in Kimitoön (Kemiönsaari) at the end of April is +10 °C. However, there is a possibility for lower temperatures. Check the weather forecast before travelling.

### **Hazards**

In the competition area there are smaller lakes which the competitors are not allowed to cross.

At some busy roads there are mandatory crossing points.

## **Event programme**

The first start of Saturday's competition is at 11 am (EET). The route to the start zone is approximately 2,4 kilometers. There will be a clothes transport from start to event center.

## **Training**

Training opportunities will be available in Pargas (Parainen) all spring: There are training packages available in terrain types similar to the competition terrain. <https://piforienteering.fi/motion/traningspaket/>

## **Accommodation**

Information about accommodation and costs will be updated on the competition website <https://www.finnishspring.fi/>

## **Food**

There is a café at the event center. It also serves lunches costing around 12 €. In the nearby town centre of Dalsbruk (Taalintehdas) there are more restaurants.

## **Transport**

No transport offered by the organizers.

## **Directions for obtaining entry permits (visas)**

According to current regulations, citizens of some countries must obtain a visa in order to enter Finland. Please check the following website of Finland's Ministry for Foreign Affairs for more information:

<https://um.fi/entering-finland-and-travelling-abroad>

Bulletin 2 will be published at the latest a week before the competition according to the timetable set by the IOF rules.